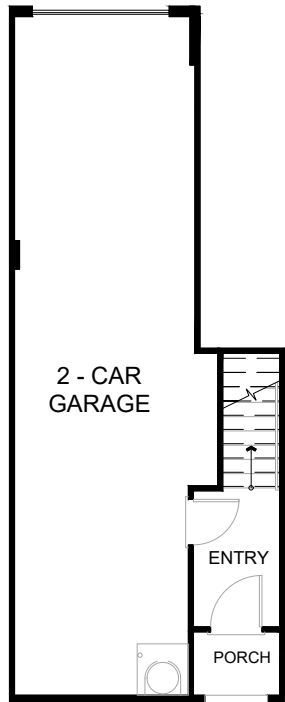


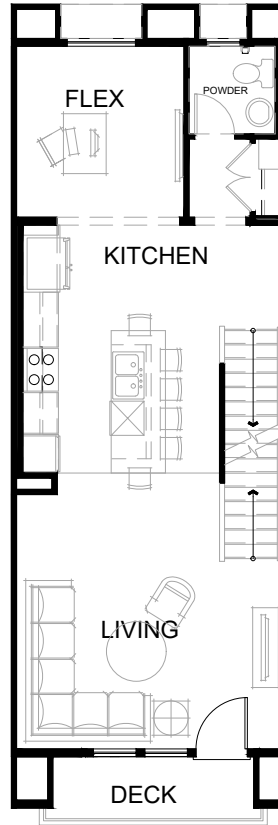


**THE ELM
PLAN 1D**

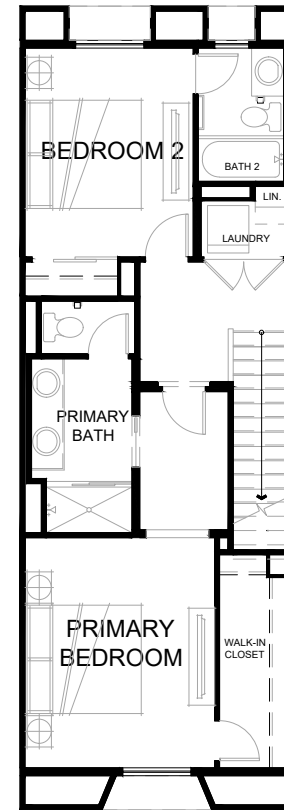
2 Bed
2.5 Bath
1,421 sq ft
2-car Tandem Garage



FIRST FLOOR



SECOND FLOOR



THIRD FLOOR

Bixby Walk by Olson Homes | 3655 Elm Avenue, Long Beach, CA 90807 | (562) 370-9541 | bixby@olsonhomes.com | BixbyWalk.com

Floorplans and renderings are artist's conception based on preliminary information. Some homesites may be pre-plotted for specific variations or options. Please consult your Home Advisor for details. In an effort to improve our homes, Olson Homes reserves the right to change features, prices or plans without notice. Windows, doors, porches, patios and decks vary per elevation and per homesite location. Floorplan measurements are approximate. Prices and availability are subject to change without notice. DRE #01877641. CSLB #939166 Olson Urban Housing, L.P. ©2024 Olson Homes and Bixby Walk™.